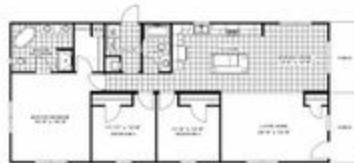




THE MOUNTAIN VIEW



THE MOUNTAIN VIEW Model number:

3 beds • 2 baths • 1584 sq.ft. • 28' width • 66' depth

Our home building facilities invest in continuous product and process improvements. Plans, dimensions, features, materials, specifications and availability are subject to change without notice or obligation. Renderings and floor plans are representative likenesses of our homes and may differ from the actual homes. We invite you to tour a Home Center near you and inspect the highest value in quality housing available or call (888) 472-8904 to speak with a Home Consultant. Copyright 2017, CMH. All rights reserved.

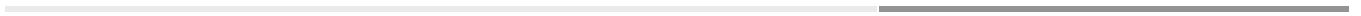
<https://www.claytonhomesofbuckhannon.com>

CLAYTON HOMES- BUCKHANNON

2358 U.S. ROUTE 33 WEST
BUCKHANNON, WV 26201

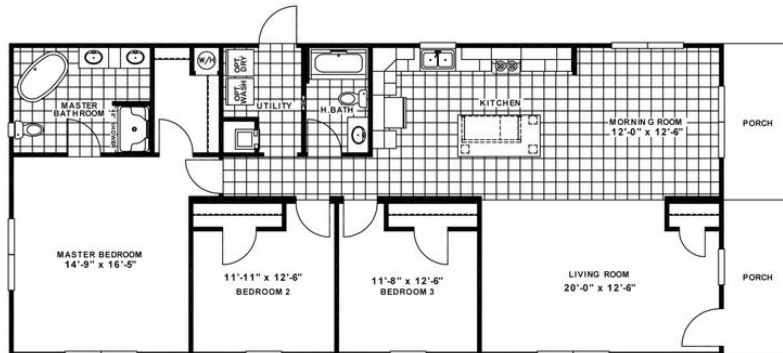
Monday - Thursday: 9am to 6pm
Friday: 9am to 6pm
Saturday: 9am to 5pm
Sunday: Closed

(888) 472-8904





THE MOUNTAIN VIEW



THE MOUNTAIN VIEW Model number:

3 beds • 2 baths • 1584 sq.ft. • 28' width • 66' depth

Our home building facilities invest in continuous product and process improvements. Plans, dimensions, features, materials, specifications and availability are subject to change without notice or obligation. Renderings and floor plans are representative likenesses of our homes and may differ from the actual homes. We invite you to tour a Home Center near you and inspect the highest value in quality housing available or call (888) 472-8904 to speak with a Home Consultant. Copyright 2017, CMH. All rights reserved.

<https://www.claytonhomesofbuckhannon.com>

CLAYTON HOMES- BUCKHANNON

2358 U.S. ROUTE 33 WEST
BUCKHANNON, WV 26201

Monday - Thursday: 9am to 6pm
Friday: 9am to 6pm
Saturday: 9am to 5pm
Sunday: Closed

(888) 472-8904